

Well Abandonment/Facility Closure Overview



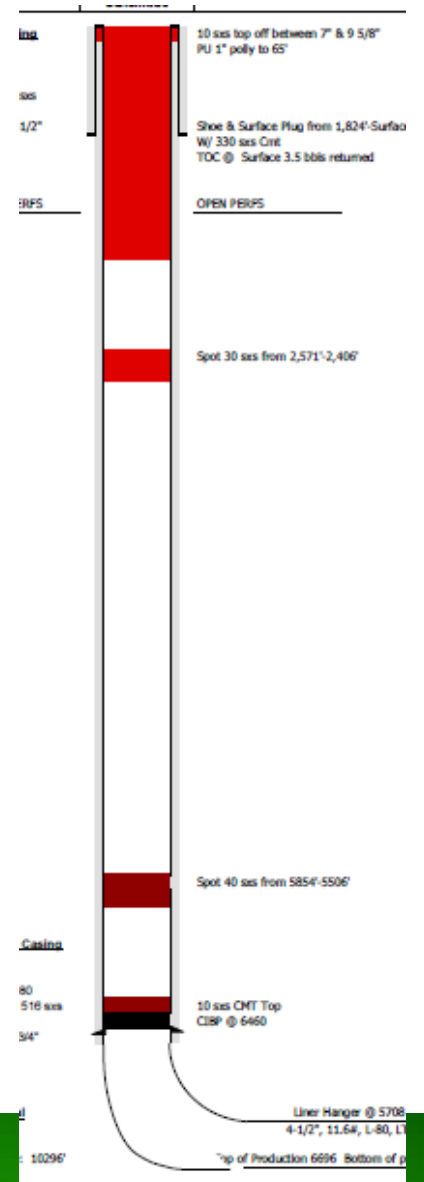
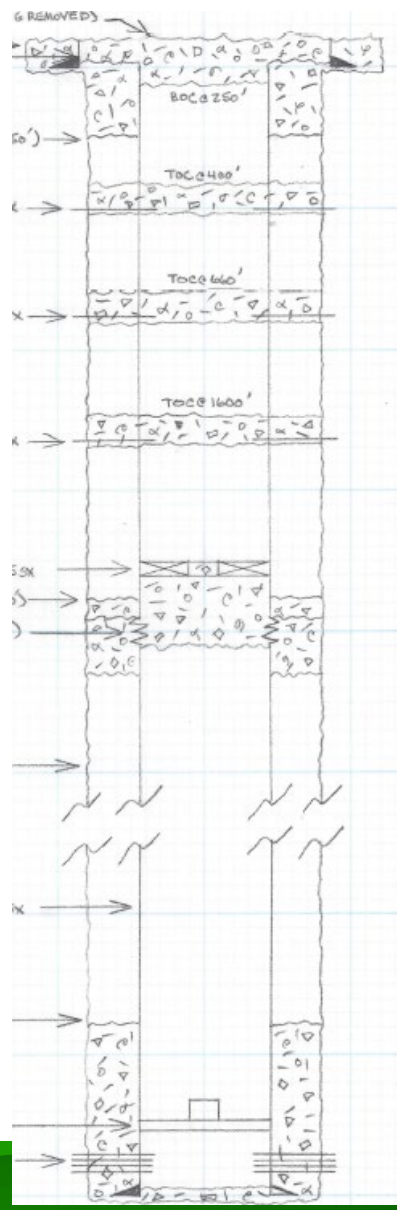
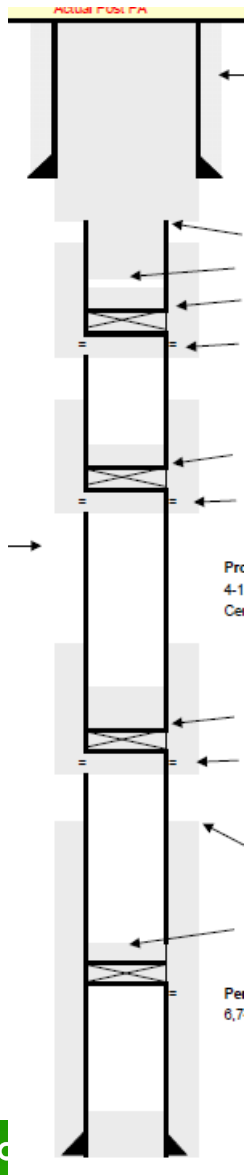
COLORADO

**Energy & Carbon Management
Commission**

Department of Natural Resources

Plugging and abandonment - well

- Isolating all productive hydrocarbons and water
- Want isolation from wellbore to wellbore
- Cement and mechanical devices



Rules and helpful guidance

- . Rule 434 - Abandonment
- . Rule 911- Closure of Oil and Gas Facilities
- . Rule 913 - Site Investigation, Remediation & Closure
- . Rule 915 - Sampling requirements
- . Table 915-1 Cleanup Concentrations

http://cogcc/reg.html#/opguidance_mc - search by
Form number

Site Closure

- . Form 27 - 30 days before plugging
 - Details planned closure with description of proposed investigation and remediation activities
- . Decommissioning equipment
- . Remediating spills or historic impacts
- . Once Supplemental Form 27 approved documenting any impacts remediated - final reclamation undertaken

Questions?

Visit our website:
ecmc.state.co.us



COLORADO

**Energy & Carbon Management
Commission**

Department of Natural Resources